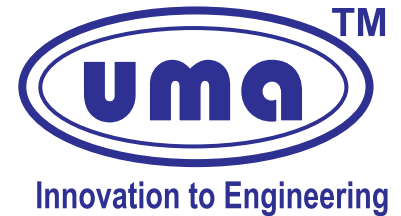


SMART-QC

Testing Power Converters



भारत में निर्मित
MADE IN INDIA



FEATURES



AC Parameters : V, A, W, PF, Hz



DC Parameters : V, A, W, Eff.



CT Ratio & Shunt setting Facility



Software Compatible with Barcode Scanner



Useful for Production Testing



Software Interfacing Facility



Big LED Display for clear view



COMPREHENSIVE TESTING OF ELECTRICAL APPLIANCES



BALLAST



LED LAMP



LED DRIVER



SMPS



CFL



UPS

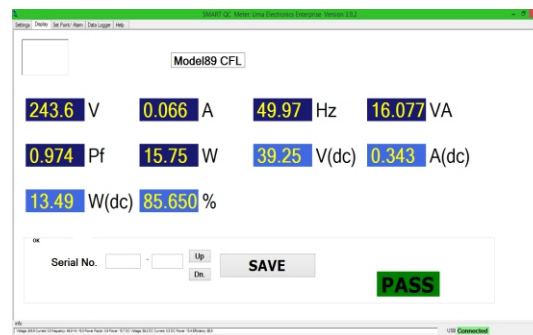


TECHNICAL SPECIFICATION

Auxiliary Power	180 - 250 V, 50 Hz
AC Input Voltage	5.0 - 500 V, 45 - 55 Hz (45 - 65 Hz, 600V range also available)
AC Input Current	10mA to 2.0A (Upto 10A range available)
DC voltage	2.0 - 200V
DC current	20mA - 5A (Up-to 20A range available)
Accuracy	Class 0.2 (for electrical parameters)
Resolution	Floating Decimal Point



SOFTWARE

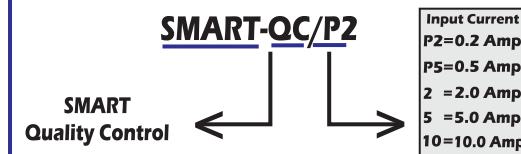


Features:

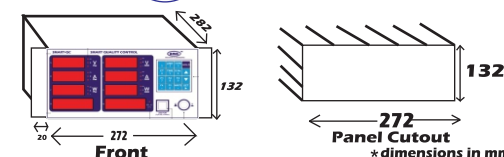
- Report Generation
- Data Logger
- Real Time View



ORDERING CODE



DIMENSION



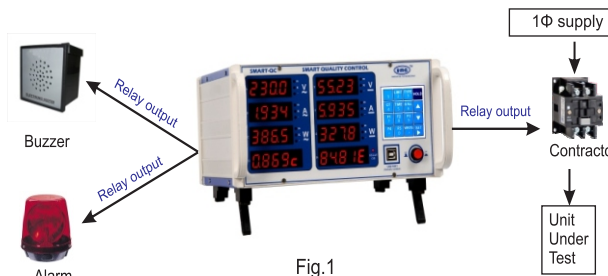
Report Generation

Excel Format in Computer

A	B	C	D	E	F	G	H	I	J	K	L	M	N	O	P
1	SMART-OC	Sr No	STATUS	Date	Time	Vrms	Arms	W	Pf	Hz	DCV	DCA	DCW	Efficiency	
2	15 W Led Driver	1	PASS	04-07-19	10:23:37	236.3	0.0656	15.38	0.9955	50.06	38.71	0.3437	13.34	86.48	
3	15 W Led Driver	2	PASS	04-07-19	10:23:53	236.6	0.0658	15.44	0.9893	50.05	38.71	0.3447	13.34	86.42	
4	15 W Led Driver	3	PASS	04-07-19	10:23:59	236.2	0.0655	15.37	0.9914	50.04	38.7	0.3432	13.28	86.41	
5	15 W Led Driver	4	PASS	04-07-19	10:24:03	236	0.0657	15.39	0.9899	50.04	38.69	0.3429	13.27	86.19	
6	15 W Led Driver	5	PASS	04-07-19	10:24:09	236.2	0.0655	15.39	0.9922	50.03	38.68	0.3424	13.34	86.06	
7	15 W Led Driver	6	PASS	04-07-19	10:24:13	236.3	0.0657	15.42	0.9912	50.03	38.7	0.3432	13.28	86.1	
8	15 W Led Driver	7	PASS	04-07-19	10:24:19	236.5	0.0659	15.53	0.9935	50.03	38.74	0.3444	13.34	85.89	
9	15 W Led Driver	8	FAIL	04-07-19	10:24:36	237.2	0.0664	15.71	0.9952	50.04	38.73	0.3427	13.27	84.44	
10	15 W Led Driver	9	FAIL	04-07-19	10:24:40	238.1	0.0659	15.53	0.9883	50.04	38.75	0.3472	13.45	86.62	
11	15 W Led Driver	10	PASS	04-07-19	10:24:52	239	0.0652	15.46	0.9898	50.04	38.74	0.3439	13.32	86.15	
12	15 W Led Driver	11	PASS	04-07-19	10:24:55	239.1	0.0652	15.47	0.9899	50.03	38.71	0.3439	13.31	86.09	
13	15 W Led Driver	12	FAIL	04-07-19	10:25:12	239.3	0.0647	15.37	0.9908	50.04	38.64	0.3422	13.22	86.03	
14	15 W Led Driver	13	FAIL	04-07-19	10:25:16	239.5	0.0645	15.34	0.9896	50.04	38.7	0.3419	13.23	86.25	
15	15 W Led Driver	14	FAIL	04-07-19	10:25:22	240.1	0.0647	15.44	0.9922	50.04	38.69	0.3444	13.33	86.3	
16	15 W Led Driver	15	PASS	04-07-19	10:25:33	239.8	0.0648	15.44	0.9918	50.03	38.66	0.3437	13.29	86.03	
17	15 W Led Driver	16	PASS	04-07-19	10:25:36	239.2	0.0646	15.33	0.9903	50.03	38.66	0.3419	13.22	86.21	



Pass/ Fail Facility



User can set alert limit for five different type of model for and
AC - Wattage, Current & Power Factor,
DC - Voltage, Current & Wattage and Efficiency.

Related Product



- Parameters : AC+THD / DC+Eff.
- Application : Production, R&D, Data logging
- Internal on board memory up to 32000 datas
- Pen-drive Interfacing facility up-to 32GB
- Computer Interfacing facility via USB Port
- Pass Fail indication facility

Developed & Manufactured By :



UMA ELECTRONICS ENTERPRISES

A-404, Vaishali Nagar,
Jaipur-302021, Rajasthan, INDIA
Tel. +91-141-2240935 Mob.: +91-7524853539
E-mail info@umaelectronics.com
Website : <http://www.umaelectronics.com>



ACCESSORIES



USB cable



Power cable



Manual



Software CD



Patch Cords